

DM-2660

Safety & Operators Manual



Table of Contents

Contents

Table of Contents.....	1
Safety Instructions.....	2
Filter Cleaning.....	4
Operating Instructions	5
Electrical Safety.....	7
Problem Solving	9
Parts list - Bucket	10
Parts List – Mid Section & Filter.....	11
Filter Cleaning Section	12
Filter Head Section.....	13
Filter Head Section List.....	14

Safety Instructions

1. Read and understand the instructions on the Dust Extractor and in this manual. Different models may have different parts and controls.
2. Equipment should only be operated by trained personnel, in good physical condition and mental health (not fatigued).
3. This equipment is intended for commercial use.
4. This equipment could produce sound pressure levels greater than 85db. The operator must wear approved safety ear protection.
5. For the operators' safety and the safety of others, always keep all guards and shrouds in place.
6. This the Dust Extractor is intended for use with concrete dust.
7. Do not lend or rent the Dust Extractor without the operating instructions for the Dust Extractor.
8. Wear clothing suitable for the job and for the work place including, safety shoes, hard hat, hearing protection, non-fogging vented safety goggles, and dust mask suitable for dust.
9. Keep body parts or any loose clothing away from moving parts. Failure to comply could result in bodily injury.
10. Do not modify the Dust Extractor in any way. Only use genuine Dustmaster parts and accessories.
11. Repairs should be performed by qualified persons only.

DM-2660 Safety & Operators Manual

12. Never operate or store the Dust Extractor in rain or if heavy moisture is present.
13. **WARNING!** Breathable silica may be generated by use and maintenance of this the Dust Extractor. Silica can cause severe and permanent lung damage, cancer, and or other serious diseases. Do not breathe the dust. Do not rely on your sight or smell to determine if dust is in the air. Silica may be in the air without a visible dust cloud. If air monitoring for silica is not provided by your employer at your work site, you must wear appropriate respiratory protection when operating or maintaining this equipment. Consult your employer for proper respiratory protection.

Filter Cleaning

1. The Dust Extractor has a filter cleaning system that operates when the filter cleaning knob is activated.
2. In normal operation, the filters will be sufficiently cleaned without the need for any manual filter cleaning such as washing the pleats directly.
3. Do not use compressed air to clean any filter as it can damage the media and allow dust to enter the motor.
4. This Rotary Filter Cleaning System is very effective and takes only 10-20 seconds to deep clean the filter when the suction motors are turned off.
5. The rotary filter cleaning is best performed when the motors are both stopped. But can assist in the cleaning during operation while the machine is in operation.
6. Above all please contact your supplier if you have a concern.

Operating Instructions

1. Wear clothes suitable for the job and for the work place including, safety shoes, hard hat, hearing protection, non-fogging vented safety goggles, and dust respirator suitable for dust.
2. Be sure all equipment is tested and tagged prior to use on any job.
3. Connect hose to the dust extractor via standard 50mm Hose cuffs. If 38mm hose is more practical, use the smaller hose after more than 50mm hose. This is to reduce the speed of the air/dust coming into the Dust Extractor.
4. Make sure the Head is secured via the over center clamps provided before plugging the machine in to power.
5. Connect the Dust Extractor to suitable power outlet. This is normally 10A. If you need to connect using extension cords please consult your supplier to confirm the best size conductor to use.
6. Always move the Dust Extractor with the handles and not by pulling the hose. Pulling the machine via the hose could make the machine tip over and damage occur to the machine.
7. Keep the Dust Extractor clear of drainage pits and grates or any such hazard. Failure to comply could result in bodily injury and or could damage the Dust Extractor or property.
8. Do not attempt to make any adjustments while the Dust Extractor is in operation. Any adjustments must only be performed when the Dust Extractor is stopped and power disconnected.

DM-2660 Safety & Operators Manual

9. Switch the Filter cleaning switch on for 20-30 seconds prior to operating if the filter is not clean.
 - a. This can be switched off after the 20-30 seconds but also can be left on during vacuum operation.
 - b. Leaving the filter cleaning on during vacuum operation is optional.
 - c. The filter cleaning does clean the filter a little whilst the motors are on, but not as effective as when the vacuum motors are off.
10. Switch the vacuum motors on using the toggle switches. There is often no need to run both motors especially if the tool it is connected to is fairly small like a hand grinder or even a Meteor™ 250 or a Satellite™ 480 and Satellite™ 650.
11. Use both motors when using a wand and floor tool to clean the floor.
12. **WARNING!** Breathable silica may be generated by use and maintenance of this the Dust Extractor. Silica can cause severe and permanent lung damage, cancer, and or other serious diseases. Do not breathe the dust. Do not rely on your sight or smell to determine if dust is in the air. Silica may be in the air without a visible dust cloud. If air monitoring for silica is not provided by your employer at your work site, you must wear appropriate respiratory protection when operating or maintaining this equipment. Consult your employer for proper respiratory protection.

Electrical Safety

1. All electrical maintenance and repairs are to be carried out by qualified persons only.
2. CAUTION - Line terminals may be alive when main switch is in the off position. Disconnect all power at source before performing any maintenance or repairs.
3. WARNING - DO NOT operate the Dust Extractor with any electrical panels open.
4. Never operate the Dust Extractor in the rain or if heavy moisture is present.
5. Never bypass over current devices in this the Dust Extractor.
6. Never connect or disconnect power cables with voltage present or while under load.
7. Disconnect all power connections and observe lock out / tag out procedures before attempting to carry out any maintenance or repair on any equipment.
8. Avoid any contact with any rotating parts or driven parts.
9. Never use equipment that has not been tested and tagged (including cords).
10. Before connecting the Dust Extractor to power, check the condition of all power leads and cables on, or used in conjunction with the Dust Extractor. DO NOT USE the Dust Extractor if any faults cuts, wear marks, bare wires out of plugs or sockets are identified.
Get qualified persons to repair and re-tag it as required by regulations in your country.

DM-2660 Safety & Operators Manual

13. Connect the Dust Extractor to suitable power outlet. This is normally 10A. If you need to connect using extension cords please consult your supplier to confirm the best size conductor to use.

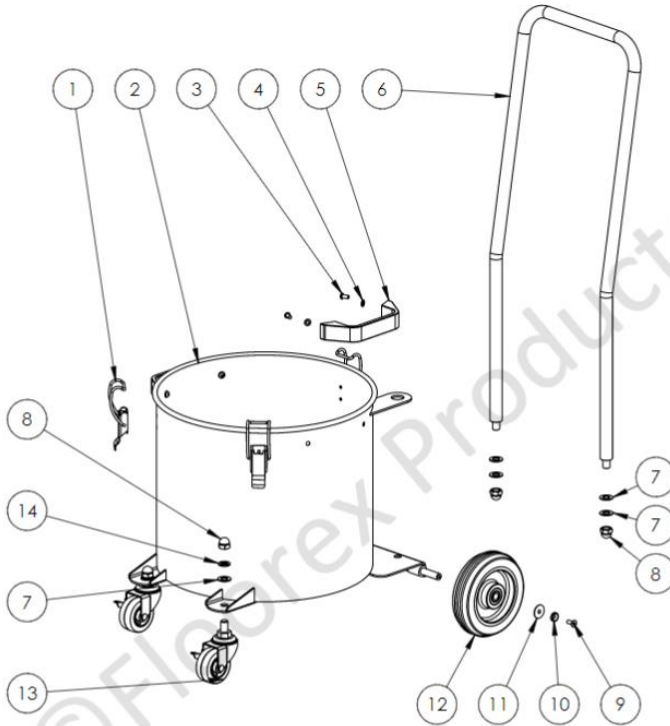
11. The Dust Extractor can produce sound pressure levels greater than 85db. The operator must wear approved safety ear protection.

Problem Solving

PROBLEM	CAUSE	REMEDY	EXPLANATION
The Dust Extractor will not start / run.	No power is present at cable PowerPoint.	Check the power is present with another tool.	Using another tool confirms power is present
	An overload has tripped	Have a qualified person check the machine for faults.	There is always a reason for the trip. You are best to find out why before proceeding.
The Dust Extractor is not sucking at all.	The head is not fitted correctly	Make sure the head is correctly positioned on the main bowl and firmly against the seal.	If the bucket is not against the seal firmly air can come in and reduce the air flow and or suction.
	The seal is missing at the bucket.	Check the seal by eye and feel around the seal area for leaks and replace or re fit.	If the seals are not correctly fitted or missing the air flow and or suction will be greatly reduced.
	The filters are blocked.	Check the rotary filter cleaning is not working	Check rotation direction is correct Check Poly Fingers are good condition
	The filter cleaning system not turning or not switched on.	Have Qualified persons check the Dust Extractor system and rectify the problem	Restores the filter cleaning mechanism.
The Dust Extractor seems to have lost suction over a period of time on the job.	The dust bin is over full.	Empty the dust bin.	

This Is a Guide Only. Consult Your Supplier for Your Application

Parts list - Bucket

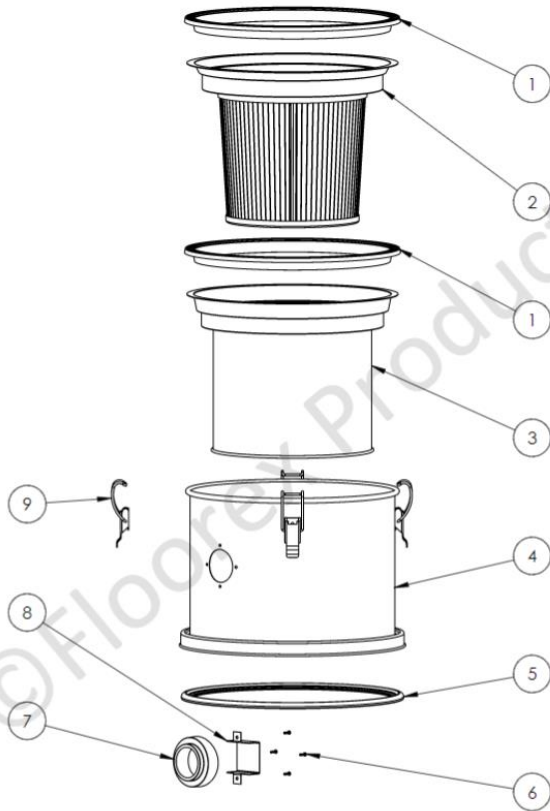


ITEM NO.	PartNo	DESCRIPTION	QTY.
1	DM-235021	DM Series Latch	3
2	DM-235058	DM Series Bucket Only	1
3	FS-210	6 X 12 Button Head	4
4	FS-330	M6 Standard Washer	4
5	DM-235055	DM Series Bucket Grab Handle Aluminium	2
6	DM-235054	DM 2660 Rear Handlebar 785mm High	1
7	FS-333	M12 Standard Washer	6
8	FS-450	1/2 Dome Nut	4
9	FS-266	M6 X 16 Socket Head Countersunk Screw	2
10	DM-235053	DM Series M6 Countersunk Spacer	2
11	FS-331	M8 Standard Washer	2
12	DM-235042	DM 1 & 2 Motor Rear Wheel	2
13	DM-235044	DM Series 1 & 2 Motor Castor Wheel	2
14	FS-318	M12 Spring Washer	2

1800 FLOOREX

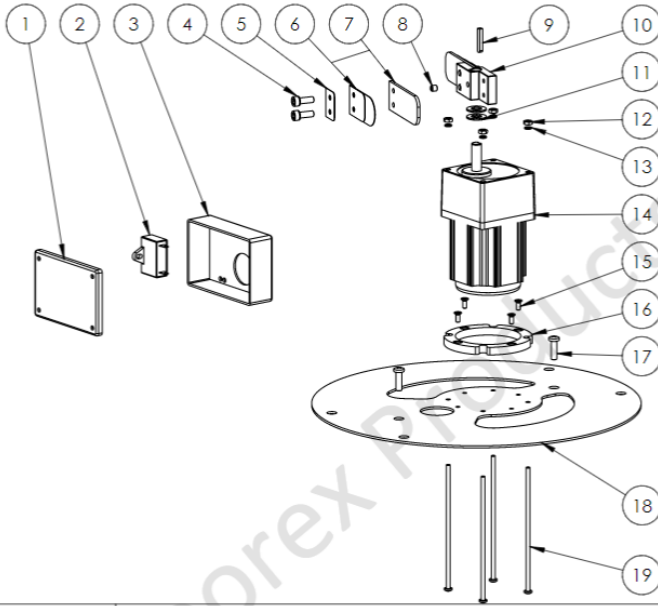
1800 356 673

Parts List – Mid Section & Filter



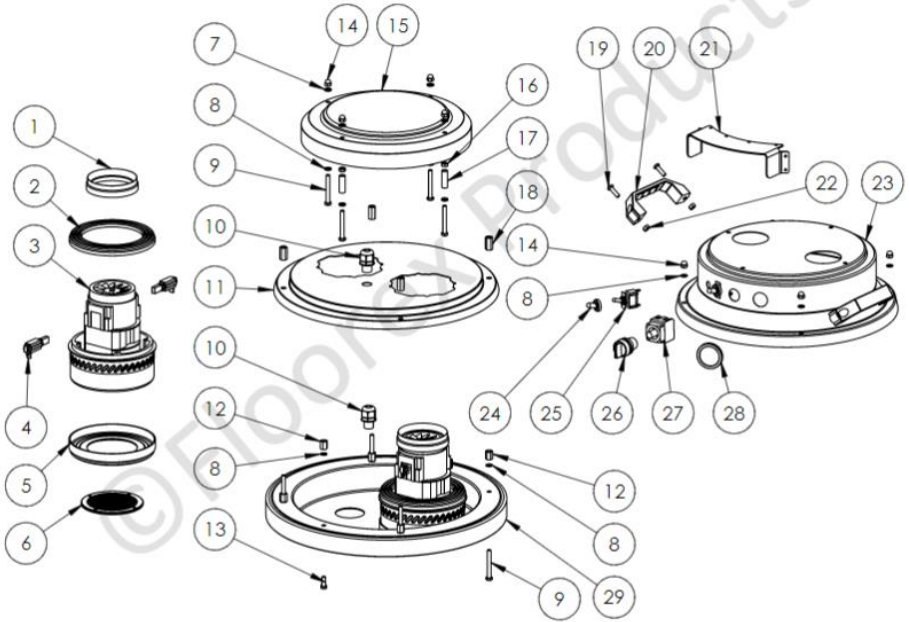
ITEM NO.	PartNo	DESCRIPTION	QTY.
1	DM-235023	Rubber Seal Section For DM Filter and Filter Protector	2
2	DM235001	DM Series 1 & 2 Motor Filter Supplied with Seal	1
3	DM235030	DM Series 1 & 2 motor filter protector ring	1
4	DM-235052	DM-2660 Middle Section with Inlet Hole & Catches	1
5	DM-235022	DM Series P Section Seal for Bucket	1
6	FS-531	8G x 1/2" Pan Head Self Tapping Screw	4
7	DM-235028	DM Series 1 & 2 Motor Inlet Black Plastic Connection	1
8	DM-235029	DM Series Inlet Deflector	1
9	DM-235021	DM Series Latch	4

Filter Cleaning Section



ITEM NO.	PartNo	DESCRIPTION	QTY.
1	DM-235026	DM Series Gear Motor Capacitor Box & Lid	1
2	DM-235057	DM Series Filter Cleaning Motor Capacitor	1
3	DM-235026	DM Series Gear Motor Capacitor Box & Lid	1
4	FS-231	M6 X 16 Socket Head Cap Screw	4
5	DM-235059	DM 2660 Filter Cleaning Finger Clamp Plate	2
6	DM-235014	DM Series Filter Cleaning Finger Set (2xNylon & 2xSteel Parts)	2
7	DM-235014	DM Series Filter Cleaning Finger Set (2xNylon & 2xSteel Parts)	2
8	FS-432	Grub Screw M6 X 6	1
9	G3-633	Key 4mm x 4mm x 20mm Rounded One End	1
10	DM-235015	DM Series Rotary Filter Cleaning Finger mount	1
11	FS-332	M10 Standard Washer	2
12	FS-341	M4 Standard Nut	4
13	FS-313	M4 Spring Washer	4
14	DM-235025	DM Series Filter Cleaning Motor and Gear	1
15	FS-492	M4 X 10 Socket Head Countersunk Screw	4
16	DM-235038	DM Series Gear Motor Mounting Ring 8mm x 90mm	1
17	FS-566	Screw Pan Head M6 X 20 Phillips	2
18	DM-235041	DM Series Gear Motor Mount Bracket 2mm x 336mm	1
19	FS-557	M4 X 130 Screw Pan Head Phillips	4

Filter Head Section



Filter Head Section List

ITEM NO.	PartNo	DESCRIPTION	QTY.
1	DM-235056	DM Motor Top Cooling Fan Rubber Seal	2
2	DM-235047	DM Motor Top Rubber Seal	2
3	DM-235002	DM Series Replacement Motor (Includes Brushes)	2
4	DM-235102	DM Series Replacement Brush	4
5	DM-235046	DM Motor bottom rubber seal	2
6	DM-235045	DM Series Motor Gauze	2
7	FS-315	M6 Spring Washer	4
8	FS-331	M8 Standard Washer	18
9	FS-464	1/4 x 2" Set Screw ZP	8
10	G3-364	Nylon Cable gland M16	2
11	DM-235048	DM Series Motor Clamp Plate	1
12	DM-235049	DM Series 14mm Hex Spacer	6
13	FS-464	Bolt 1/4 x 2" ZP	2
14	FS-451	1/4" Dome Nut ZP	8
15	DM-235032	DM Series 1 & 2 top chrome cover	1
16	FS-373	1/4" Nut	4
17	DM-235042	DM Series Spacer for Chrome Top	4
18	DM-235049	DM Series 14mm Hex Spacer	4
19	FS-566	Screw Pan Head M6 X 20 Phillips	4
20	DM-235016	Dm Series Black Grab Handle	2
21	DM-235017	Switch Protector for DM Series Vacuums	1
22	FS-343	M6 Standard Nut	5
23	DM-235033	DM Series 2 Motor Cover	1
24	DM-235019	Replacement Boot for Toggle Switch for DM Vacuums	2
25	DM-235020	DM Series Replacement Toggle Switch	2
26	DM-235036	DM Series Filter Rotary Shaker Switch	1
27	DM-235036	DM Series Filter Rotary Shaker Switch	1
28	DM-235039	DM Series Vacuum Gauge	1
29	DM-235034	DM Series 2 Motor Base Mount	1



Floorex Products

Your complete supplier of
all your concrete surface
preparation needs

- Diamond grinders
- Dust extraction
- Shotblasters
- Screed mixers
- Diamond Tooling
- Floor Scrapers
- Coating application

Web:

www.floorex.com.au

Email:

sales@floorex.com.au