

# GrinderTec GT-444

## SAFETY & OPERATORS MANUAL

CAUTION: Read the instruction manual before using the appliance.



# GrinderTec - GT-444

## Table of Contents

Specifications	3
Warranty	4
Safety instructions	5
Maintenance	10
Maintenance	11
Electrical safety	12
Parts Listing Motor	13
Parts Listing Grinding Head	13

# GrinderTec - GT-444

## Specifications

GrinderTec GT-444	
Weight	6.6kg
Dimensions	330mm x 270mm x 265mm (Length X Width x Height)
Rated Voltage	230 V~
Rated Power	2400w 10A
Preparation Path	220mm

## GrinderTec - GT-444

### Warranty

The GrinderTec GT444 is offered with a 1 year Limited manufacturer's Warranty against defects. This does not mean the machine is indestructible or will not require replacement parts as there are some parts which are normal replacement items and the wear is not a fault of manufacture.

Our goods come with guarantees that cannot be excluded under the Australian Consumer Law. You are entitled to a replacement or refund for a major failure and compensation for any other reasonably foreseeable loss or damage. You are also entitled to have the goods repaired or replaced if the goods fail to be of acceptable quality and the failure does not amount to a major failure.

As these goods are not of a kind ordinarily acquired for domestic, household or personal use, Floorex is entitled to limit their liability to sellers (companies or individuals who resell the machine) to the cost of replacing the goods, having the goods repaired or obtaining equivalent goods (whichever is lowest).

Consumer Guarantees are a contract between the seller and the consumer. For this reason if goods are purchased to be resold or to be transformed into a product that is sold, the consumer guarantees between Floorex and the re-seller will not apply.

Compensation - Manufacturers are not responsible for problems with goods beyond their control. For this reason Floorex will not be held liable for:

1. An act, default, omission or representation made by some other person (excluding an employee or agent of the manufacturer).
2. Contract penalties such as promises for completion date of jobs. These are at the risk of the parties involved.
3. A cause independent of human control that occurs after the goods left the manufacturer's control

The consumer guarantees require you to return goods to the place where they were purchased unless it is not reasonable for you to do so. For example, it would be reasonable to expect you to return an item if you would be able to easily take it away with you when you purchased it. However, if the item is large, heavy or bulky or needed to be delivered, the seller should arrange for this to be returned.

For this reason for timely repairs and as little downtime for the consumer, Floorex may offer to have the machine repaired by a nominated repairer close by.

# **GrinderTec - GT-444**

## **Safety instructions**

1. Read and understand the instructions on the tool and in this manual before use.
2. Use of the tool in a manner other than outlined in this manual, could result in injury, electric shock or fire.
3. Be sure all equipment is tested and tagged prior to use on any job.
4. Equipment should only be operated by trained personnel, in good physical condition and mental health (not fatigued). The operator and maintenance personnel must physically be able to handle the bulk weight and power of this tool.
5. Check power cords and plugs are in good condition before use. Do not use the equipment if there are any cuts, abrasions or damage to the power cord or plug.
6. Remove all wrenches and fitting devices from the tool before use.
7. Maintain a safe operating distance to other personnel.
8. This equipment is intended for commercial use.
9. For the operator's safety and the safety of others, always keep all guards and shrouds in place.
10. Never plug in, start or run tool when unattended. Before plugging in the tool to power, ensure the trigger is released and the tool switch is in the off position.
11. Inspect entire area to be ground before grinding and remove any bolts or concrete nails (etc.) that could damage diamond tooling or tool which could cause a hazardous situation.
12. Ensure there are no obstacles or existing structures that could present a hazard to the operator. If so, take necessary action to eliminate the hazard.
13. This tool is intended for use on flat surfaces only.
14. Never start or run the equipment when discs are not in contact with the surface.
15. Do not lend or rent equipment without the operating instructions for the tool.
16. Wear clothing suitable for the job and for the workplace including, safety shoes, hard hat, hearing protection, non-fogging vented safety goggles, and dust mask suitable for the workplace and task.
17. Keep body parts, long hair and loose clothing away from moving parts. Failure to comply could result in bodily injury.
18. Do not modify the equipment in any way. Only use genuine GrinderTec GT-444 parts and accessories.
19. Repairs should be performed by qualified persons only.
20. Ensure parts have stopped moving and disconnect power before servicing or changing blades or accessories.

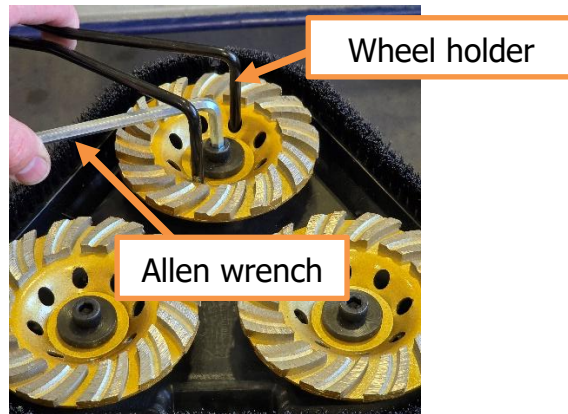
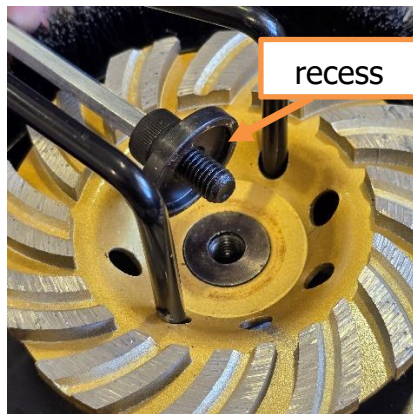
## **GrinderTec - GT-444**

21. Ensure there are no obstacles or existing structures that could present a hazard to the operator. If so, take necessary action to eliminate the hazard.
22. Keep tool clear of drainage pits and grates or any such hazard. Failure to comply could result in bodily injury and or could damage the tool or property.
23. Never operate the equipment in rain or if heavy moisture is present.
24. Never operate this tool in explosive environments such as vapor or flammable liquids, sparks from the equipment could result in fire or explosion.
25. Do not operate GrinderTec GT-444 with any guards, shrouds, covers or doors removed or open.
26. Always connect a suitable dust collection apparatus to this tool. Grinding, sanding and polishing can cause hazardous dust which can affect the users and bystanders. Be sure connected dust collectors are compliant with Health and safety rules.
27. This tool requires a minimum of 30 liters a second of air flow for safe operation.
28. The GrinderTec GT-444 can produce sound pressure levels greater than 85db. The operator must wear approved safety ear protection.
29. Do not allow the supply cord to come in contact with the cutting blade/head or other moving parts of this tool.
30. **WARNING!** Breathable silica may be generated by use and maintenance of this tool. Silica can cause severe and permanent lung damage, cancer, and or other serious diseases. Do not breathe the dust. Do not rely on your sight or smell to determine if dust is in the air. Silica may be in the air without a visible dust cloud. If air monitoring for silica is not provided by your employer at your work site, you must wear appropriate respiratory protection when operating or maintaining the tool. Consult your employer for proper respiratory protection.

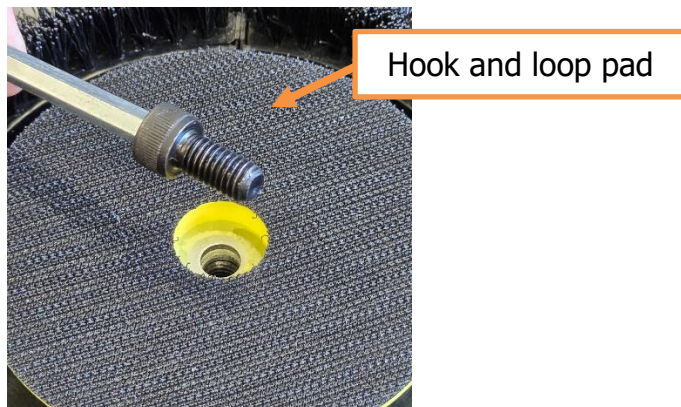
# GrinderTec - GT-444

## Operating instructions

1. Connect the tool to a suitable power outlet. Only use heavy duty power lead suitable for high current use (minimum 1.5 mm<sup>2</sup> cable), no longer than 20 meters.
2. If no power is available within the specified distance, have a qualified person install a suitable power outlet closer to your work. Alternatively use 2.5mm<sup>2</sup> cable for up to 40 meters.
3. Install appropriate tooling for the GrinderTec GT-444, only use genuine tooling and adapters that are in good condition, inspect tooling before use to ensure they are safe to use.
4. **To install diamond cup wheels**
  - a. use the recessed retaining washer and M8 Socket head bolt. The recess of the retaining washer should face the disc.
  - b. To Ensure a tight fit, use the Allen wrench and wheel holder as follows.
  - c. Tighten firmly.
  - d. Do not use impact tools to tighten. Impact tools can be used to remove the bolt if it becomes too tight to remove by hand.



- 5.
6. **To install the hook and loop pad**
  - a. Remove the recessed retaining washer and use the M8 socket head only as follows
  - b. Tighten as tight as you can while holding the pad by hand.
  - c. There is no need to be as tight as the cup wheel.
  - d. Do not use impact tools to tighten.

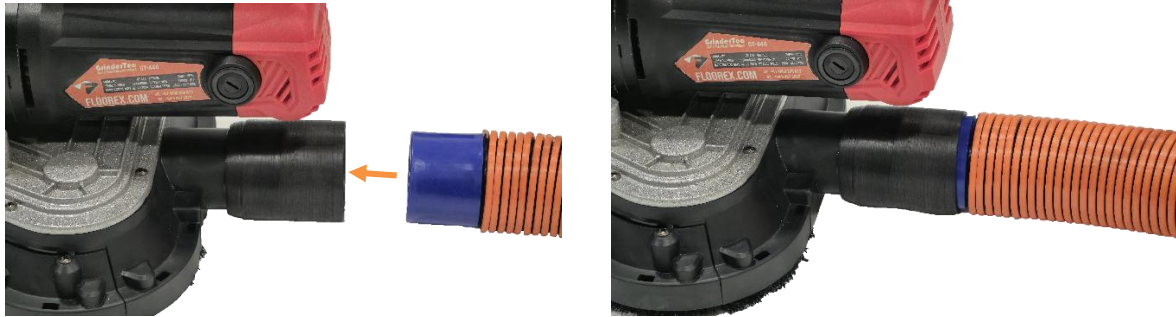


7.



## GrinderTec - GT-444

8. Connect a suitable dust extractor to the tool via a 50mm flexible hose.
9. The tool is designed to take the standard FLOOREX 50mm hose ends to make connection of dust extractors easy and hassle free.



- 10.
11. Keep tool clear of drainage pits and grates or any such hazard. Failure to comply could result in bodily injury and or could damage the tool or property.
12. Switch on the dust extractor.
13. Hold both the handles firmly during use as illustrated below. Do not use the tool with one hand, always use two hands to control this tool.



- 14.
15. Place the tool on the surface ready to be ground. Ensure there are no foreign objects or debris under the tool.



## GrinderTec - GT-444

16. Switch the tool on by pulling the trigger. The tool has a soft start.
17. The GrinderTec GT-444 has variable speed adjustment knob, this can be adjusted before or during operation.



- 18.
19. The trigger on the GrinderTec GT-444 can be locked-on during operation.
20. Warning! If there has been an interruption to the power source while machine is in operation, be sure to release the trigger lock by squeezing the trigger and letting the trigger go ensuring the trigger has returned to the off position.
21. Below images show the switch locked-on and the switch in the off position.

Trigger in Locked-on position



Trigger in off position



22. Keep the tool out of reach of children and unqualified persons. Never leave the tool plugged in when unsupervised.

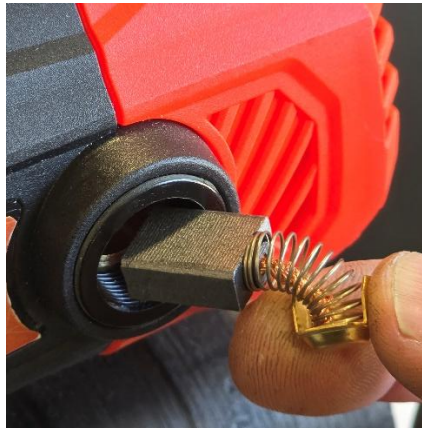
# GrinderTec - GT-444

## Maintenance

1. Repairs and maintenance should only be performed when the tool has been disconnected from power and is safe to do so.
2. Repairs should be performed by qualified persons only.

### 3. Brushes

- a. This tool has two motor brushes.
- b. The tool is supplied with a set of spare brushes.
- c. The brushes can be replaced as required
- d. The brush caps can be removed by using a flat blade screwdriver.
- e. Before installing the new brush, ensure the groove is free of debris and dust.
- f. Ensure the new brush can slide freely in the groove
- g. Install the new brush and secure the brush cap firmly with a flat blade screwdriver. Do not over tighten.



### 4. Belt

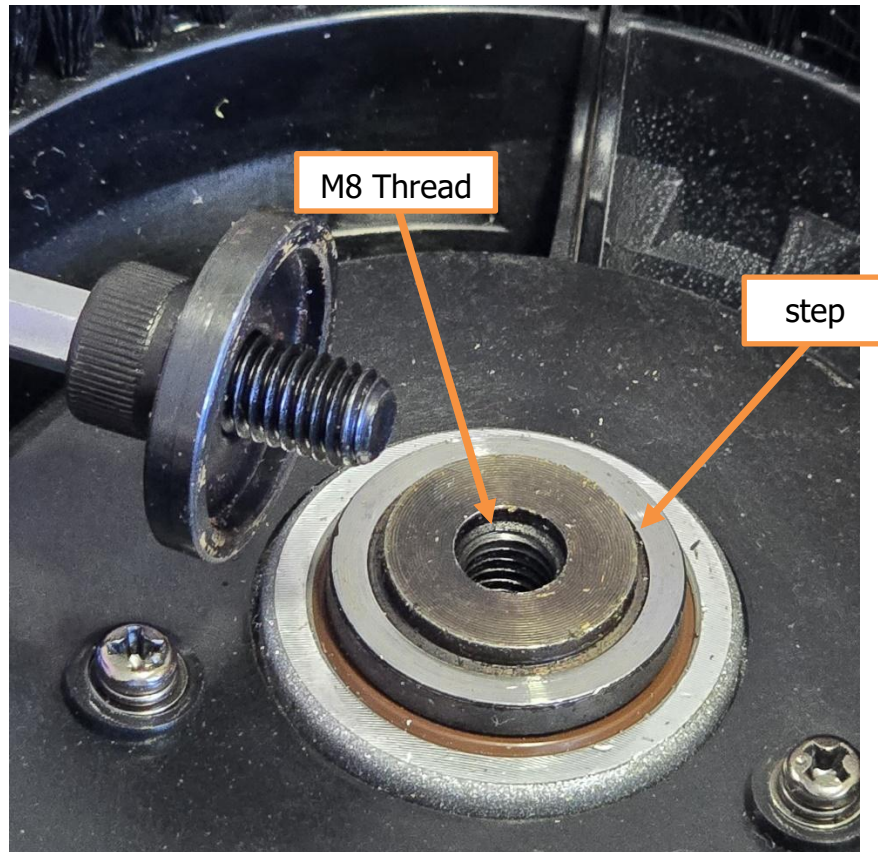
- a. This tool is driven internally via a poly v belt, this belt may require replacement from time to time.
- b. If the belt has failed, the rear two output spindles will stop rotating but the front one will continue to work.
- c. To replace the belt, ask your Floorex representative for more information.

# GrinderTec - GT-444

## Maintenance

### 5. Spindles

- a. The output spindles have threads internally. These threads should be kept clean of debris and dust build up.
- b. The output spindles have a step face that the diamond cup wheel must center over. Ensure the step face is in good condition and clean of debris before installing tooling.



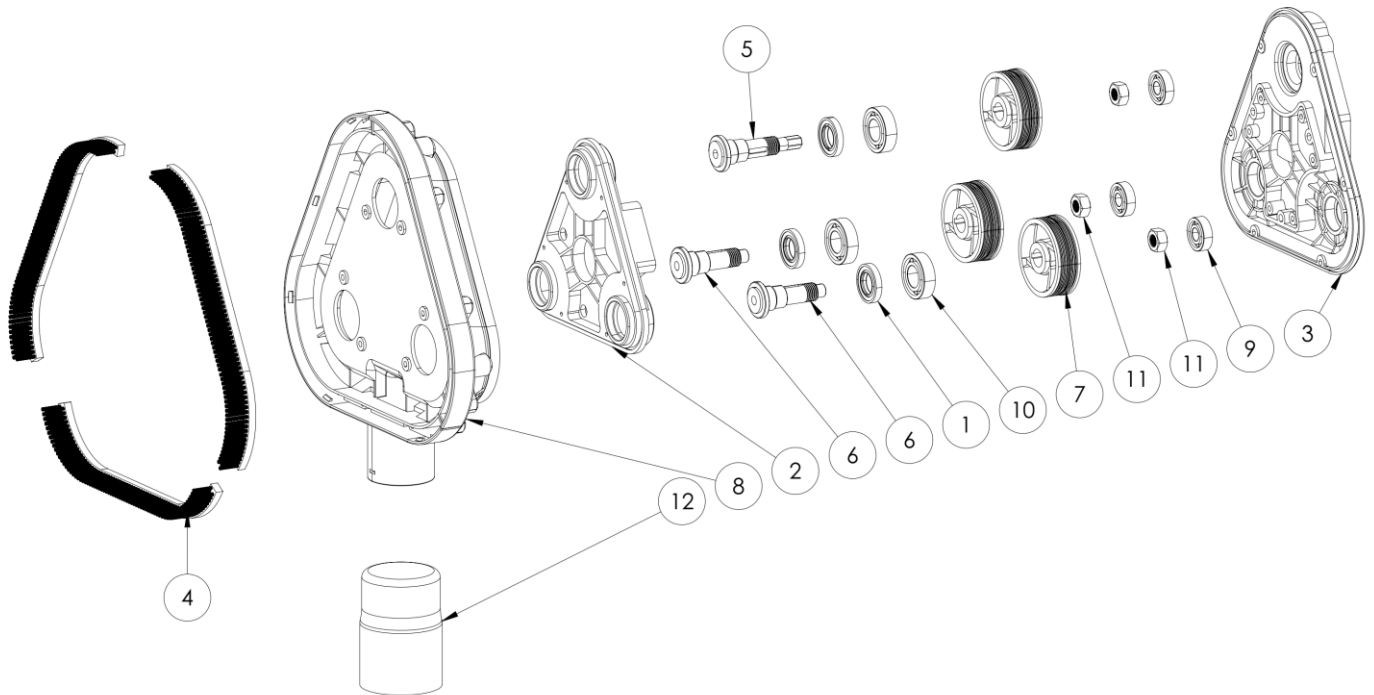
## **GrinderTec - GT-444**

### **Electrical safety**

1. All electrical maintenance and repairs to be carried out by qualified persons only.
2. Caution! - Disconnect all power at source before performing any maintenance or repairs.
3. Warning! – Do not operate the tool with any electrical panels open.
4. Warning! If there has been an interruption to the power source while machine is in operation, be sure to release the trigger lock by squeezing the trigger and letting the trigger go ensuring the trigger has returned to the off position.
5. Never operate tool in the rain or if heavy moisture is present.
6. Never connect or disconnect power cables with voltage present or while under load.
7. Disconnect all power connections and observe lock out / tag out procedures before attempting to carry out any maintenance or repair on any equipment.
8. Avoid any contact with any rotating parts or driven parts.
9. Never use equipment that has not been tested and tagged (including cords).
10. Do not operate GrinderTec GT-444 with any covers or doors removed or open.
11. Before connecting the tool to power, check the condition of all power leads and cables on, or used in conjunction with the tool. DO NOT USE it if any fault(s) cuts; wear marks, Bare wires out of plugs or sockets, etc. Get qualified persons to repair and re-tag it as required by regulations in your country.

# GrinderTec - GT-444

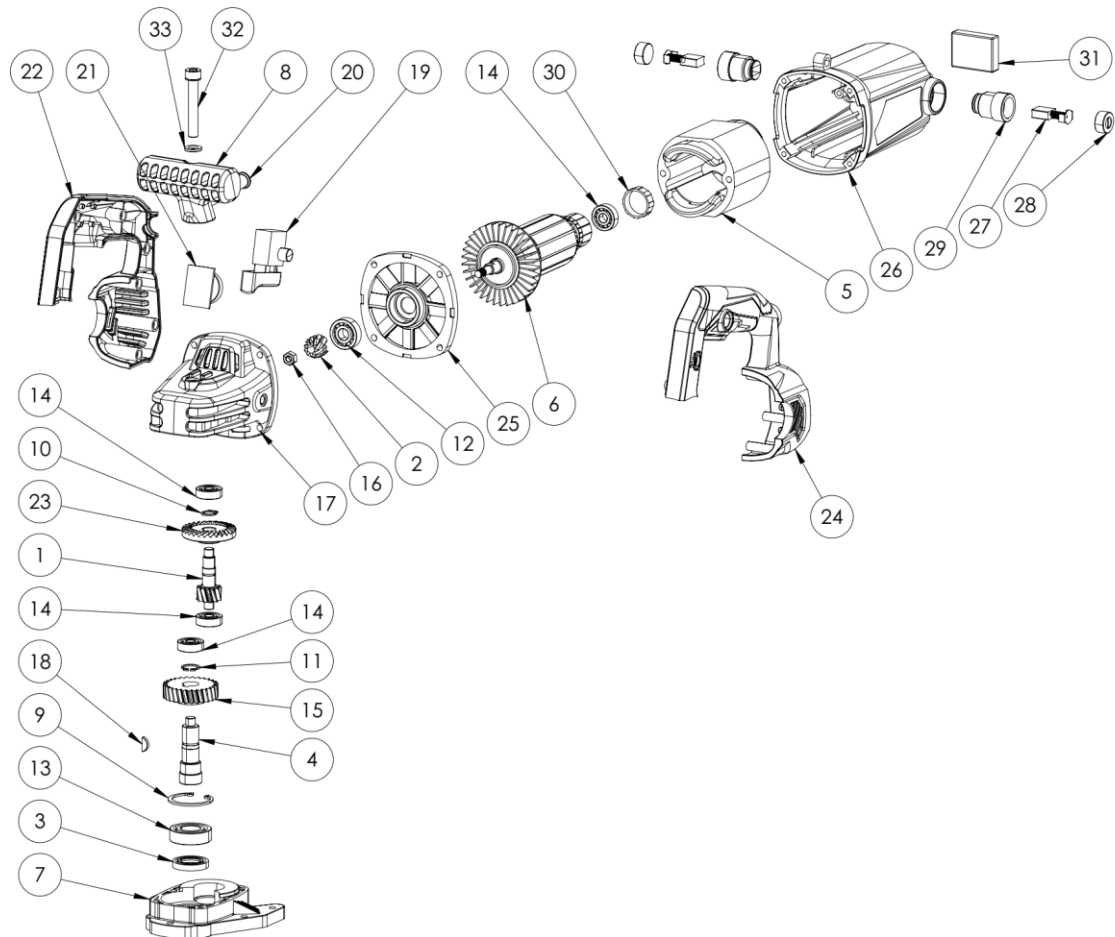
## Parts Listing



ITEM NO.	PartNo	DESCRIPTION	QTY.
1	GT-4-091	TC oil seal 30 x 17 x 5	3
2	GT-4-058	GrinderTec GT-444 - Main Head Lower Casing	1
3	GT-4-057	GrinderTec GT-444 - Main Head Upper Casing	1
4	GT-4-004	GrinderTec GT-444 - Skirt Brush Seal Set (3pcs) Incl. Springs	3
5	GT-4-043	GrinderTec GT-444 - Satellite Shaft Main	1
6	GT-4-044	GrinderTec GT-444 - Satellite Shaft	2
7	GT-4-054	GrinderTec GT-444 - Pulley	3
8	GT-4-059	GrinderTec GT-444 - Shroud with Port Set	1
9	EI-80410020	6000 C3 DDU Bearing	3
10	GT-4-056	6003 DDU bearing	3
11	GT-4-052	GrinderTec GT-444 - Satellite Shaft Locking Nut	3
12	GT-4-062	GrinderTec GT-444 - Port Adapter	1



## GrinderTec - GT-444



ITEM NO.	PartNo	DESCRIPTION	QTY.
1	GT-4-090	GrinderTec GT-444 - Intermediate Spindle	1
2	GT-4-084	GrinderTec GT-444 - Motor Shaft Spur Gear	1
3	GT-4-091	TC oil seal 30 x 17 x 5	1
4	GT-4-104	GrinderTec GT-444 - Main Output Spindle	1
5	GT-4-041	GrinderTec GT-444 - Motor Stator	1
6	GT-4-040	GrinderTec GT-444 - Motor Rotor	1
7	GT-4-103	GrinderTec GT-444 - Gear Box Output Casing	1
8	GT-4-076	GrinderTec GT-444 - T Handle	1
9	GT-4-093	35mm Internal Circlip	1
10	GT-4-095	10mm External Circlip	1
11	GT-4-094	12mm External Circlip	1
12	EI-80410020	6000 C3 DDU Bearing	1
13	GT-4-056	6003 DDU bearing	1
14	GT-4-089	608 C3 DDU Bearing	4
15	GT-4-096	GrinderTec GT-444 - Output Shaft Helical Spur Gear	1
16	GT-4-085	GrinderTec GT-444 - Main Retaining Nut	1
17	GT-4-097	GrinderTec GT-444 - Main Gearbox Casing	1
18	GT-4-105	GrinderTec GT-444 - Main Output Woodruff Key	1
19	GT-4-075	GrinderTec GT-444 - Trigger	1
20	GT-4-072	GrinderTec GT-444 - Rubber Cable Support	1
21	GT-4-074	GrinderTec GT-444 - Speed Knob	1
22	GT-4-070	GrinderTec GT-444 - Right Side Handle	1
23	GT-4-098	GrinderTec GT-444 - Intermediate Shaft Spiral Bevel Gear	1
24	GT-4-071	GrinderTec GT-444 - Left Side Handle	1
25	GT-4-088	GrinderTec GT-444 - Front Bearing Support Plate	1
26	GT-4-080	GrinderTec GT-444 - Motor Housing	1
27	GT-4-003	GrinderTec GT-444 - Motor Brush Pair	2
28	GT-4-078	GrinderTec GT-444 - Brush Retainer Cap	2
29	GT-4-079	GrinderTec GT-444 - Brush Holder	2
30	GT-4-081	GrinderTec GT-444 - Rear Bearing Rubber Ring	1
31	GT-4-008	GrinderTec GT-444 - Speed Controller Module	1
32	FS-240	M8 X 50 Socket Head Cap Screw	1
33	FS-316	M8 Spring Washer	1







## Floorex Products

Your complete supplier  
of all your concrete  
surface preparation  
needs

- Diamond grinders
- Concrete Polishers
- Dust extraction
- Shot blasters
- Screed mixers
- Diamond Tooling
- Floor Scrapers
- Coating application

FLOOREX PRODUCTS  
11 Jennings Road  
Swan Hill VIC.  
3585

Web: [www.floorex.com.au](http://www.floorex.com.au)  
Email: [sales@floorex.com.au](mailto:sales@floorex.com.au)